

Several steps to promote sustainable development were taken in 2010, in both the bidding phase and during actual construction. In France and around the world, the environmental and societal policy driven by VINCI Construction Grands Projets has had a growing impact year after year, actively contributing to performance results.

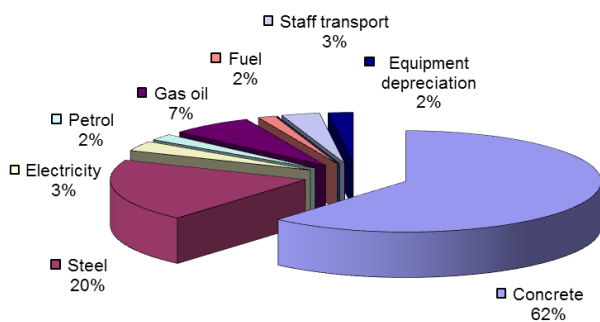
Our Commitment to environment

- Promote innovative ecodesign solutions
 - Select low environmental impact technical solutions and material
 - Explore renewable-energy solutions
- Respect environment on our worksites
 - Control electricity, fuel, and water consumption
 - Reduce, collect and recycle construction-related waste
 - Protect the soil and control waste-water quality
- Preserve biodiversity

MEASURING CO₂ EMISSIONS

In 2010, VINCI Construction Grands Projets reported emissions totalling 281,000 tonnes of CO₂ equivalent, representing 393 g of CO₂ equivalent per euro of turnover. CO₂ emissions in 2010 were reduced by nearly 7% in comparison to 2009.

2010 CO₂ emissions



CO₂ ATTITUDE

The CO₂ Attitude programme was launched in January 2010 so that projects could be included in a proactive approach to reducing greenhouse gases. The aim was to reduce our emissions by 20,000 tonnes of CO₂ equivalent before the end of 2011. GESTim™, a programme developed by VINCI Construction Grands Projets to calculate CO₂ emissions, processes the input data required to calculate the amount of greenhouse gases emitted by each accountable unit on a construction site.

Nine projects were analysed using this programme, and each one agreed to follow three lines of improvement to save CO₂.

In October 2010, the CO₂ Attitude programme was applied to the EKPPT project in Greece.

Interview with Pierre Morand, Project Director, Egion-Patras section of the EKPPT motorway:

"I was surprised by how quickly the diagnostic was reached. Data input to GESTim™ was fast and it is a good tool. The CO₂ analysis revealed sources of CO₂ emissions that we had never imagined. Its analytical approach provides overall ratios and compares project data with total emissions for VINCI Construction Grands Projets, as well as other projects and product categories (concrete, materials, etc.)."

We noticed that for certain items there was not much room for action. Nonetheless, we still found ways to save emissions, which sometimes even cut costs.

Although CO₂ is an abstract notion, this programme is a good way to start raising awareness amongst our teams.

For the next phase, we are working on finding an alternative to sealants and developing car pooling."



REDUCING OUR ECOLOGICAL FOOTPRINT

QDVC pledges to recycle electronic waste

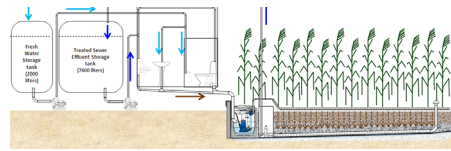
QDVC, the Qatari subsidiary of Qatari Diar (51%) and VINCI Construction Grands Projets (49%), has signed an agreement with Qtel, the incumbent telephone operator in Qatar, to collect electronic waste for recycling.

This initiative was launched at Qtel sales points at the end of June 2010, and QDVC was the first private company in the country to contact the telephone operator to form a partnership. Phones, batteries and laptop computers recovered from all QDVC worksites and offices will be sent to Singapore for recycling, as this industry has not yet been developed in Qatar.



This electronic waste collection initiative is just one of the aspects of a wider sustainable development policy, developed in detail in a charter adopted by QDVC last June.

Reed bed greywater recycling Programme for the Lusail Light Rail Transit System in Qatar



A reed bed operates like a wastewater treatment plant. This process recycles construction site greywater, saving nearly 70% on water consumption. Wastewater flows into an artificial wet area (the reed bed), and is then filtered and cleaned by microorganisms living in the roots of the reeds. The treated water is reused to flush toilets.

Our Commitment to civic responsibility

- Ensure safety and security on our worksites
- Enhance our personnel's sets
- Promote professional diversity
 - Encourage more women candidacies
 - Ensure effective integration of employees with disabilities
 - Integrate, train and promote employees from different ethnic backgrounds
 - Support knowledge and skill transfer from senior to more junior personnel
- Encourage civil initiatives



HEALTH AND SAFETY



(A)live on site

In 2010, 842 people were trained in the "(A)live on site" programme on our various construction sites, giving a total of 1,964 people trained since the programme was launched in 2008.



Trainee satisfaction with the programme was rated at 97%. Participants found the awareness programme a very stimulating and participative process. The fact that they were able to give their opinion was important. It was often the first time that some were able to express themselves openly, a practice that is unusual or not allowed in certain cultures. The site management was also satisfied with the programme and set up a plan of action in response to comments made by participants during previous sessions.

While workers often agreed to clean up their workstations and pay closer attention to safety, management agreed to make themselves more available in the field, spending more time with workers to explain the purpose of their work.

HEALTH AND SAFETY

The Gold Helmet Award

As part of the Lee Tunnel project in England, every month the consortium formed by Morgan Sindall, VINCI Construction Grands Projets and Bachy Soletanche Ltd gives recognition to the employee who proposes the best "Positive Intervention" in Safety.

The winner receives an award and £100 towards restaurant expenses. The construction site also implements other good ideas proposed by employees so that everyone is involved, including subcontractors.



TRAINING

ORCHESTRA

Orchestra is a training course on preparing and scheduling construction sites, designed particularly for our civil engineering trades. It consists of a single course that is the same for everyone, based on clear and efficient methods for successfully completing construction projects.

In 2010, 84 people from VINCI Construction Grands Projets were trained, for a total of 1,750 hours of training.



COMMUNITY COMMITMENT

Community relations within the Eritrean resort project

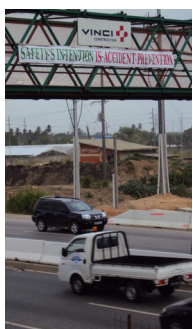
The fully equipped clinic at QDVC's Dahlak work camp often provides medical assistance to the local population living near the worksite. When necessary, the medical team makes transportation arrangements to send patients to the hospital at Massawa.

Last summer the project provided drinking water to villages in the area.

Qatari Diar and local authorities are looking for ways to supply water on a long-term basis.

Aranguez Bridge in Trinidad and Tobago

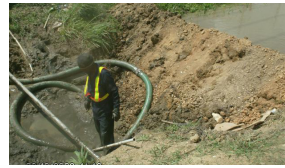
Safety awareness



The safety of motorway users is one of the main concerns on this worksite. To drive this message home, a banner was hung across the footbridge over the motorway during construction of the Aranguez Bridge and the CRH/UBH Interchange Package declaring "SAFETY'S INTENTION IS ACCIDENT PREVENTION".

Helping to drain nearby farmlands

Roughly twenty lots were located near the construction area. During heavy rainfalls, farms were flooded due to poor irrigation conditions. In one area a water channel was completely overrun with vegetation. The project asked local authorities in charge of maintenance to clean out the channels. In other spots certain drainage systems were clogged, keeping farms in the southern area from being irrigated correctly. The project opened a new trench and unclogged a channel so that water could flow away easily.



The Lee Tunnel in England takes a proactive approach

The Lee Tunnel project will halve the 32 million cubic metres of sewage water discharged into the Thames each year by collecting it at the source.



Simple environmental actions were set up on the construction site. Trees around the site were protected.

Lighting was designed to avoid disturbing bats at night. The construction schedule took into account measures required to preserve the migration and reproduction of certain aquatic species. Composting of organic matter was implemented in the offices.

The Lee Tunnel project has been commended for the quality it has achieved in organisation, safety and worker well-being. Its sustainable development plan includes close to thirty actions focusing on concrete measures such as car pooling, sharing good practice, collecting funds for charitable organisations, leading discussions in schools on environmental issues at construction sites or the functioning of a TBM, and organising a cleanup event along the banks of the Thames in partnership with the client.

The project is audited regularly by the Considerate Constructors Scheme (CCS) and reached an excellent score of 37.5 out of 40.

"The project exemplifies the level of excellence achievable and the skills available in the industry [...] the project is of the highest calibre and an interesting and enjoyable experience for any builder to observe." George Humphray – CCS Auditor



Our Commitment to the future

- Extend our activities to our main stakeholders
 - Respond to client expectations and put forward innovative solutions
 - Enlist the support of partners, suppliers and subcontractors in our approach
- Respond to the requirements of the Global Compact, signed by VINCI
- Measure our progress as part of a continuous improvement approach

The Company Manual moves with the times

To improve our productivity, promote company values and ensure that practices comply with these values, a new, friendlier Company Manual was issued in 2010. Written for all our employees, it presents our basics, values and sustainable development themes, to unite our employees in a shared corporate culture.



Communicating better

Sustainable development is an important issue not only for our clients, but also for our construction sites and subsidiaries. Monthly newsletters at QDVC in Qatar or annual reports on projects such as the Lee Tunnel in England represent pertinent communication tools both inside and outside the corporation.

Raising client awareness of good practice at Hoi An

The Hoi An project in Vietnam volunteered to share its Quality, Safety and Environment experience with its client and subcontractors through two-hour training sessions on the main rules to be observed on a construction site.

The courses were attended by 18 people.



Sustainable development diagnostic for QDVC



A Vigeo assessment was conducted in December 2010 at QDVC, who had decided to benchmark environment, human resources, human rights, community commitment, and relations with clients, suppliers and subcontractors on any topics related to sustainable development (SD). Two auditors spent five days in Qatar to audit QDVC and interview managers, workers, suppliers, clients and associations:

"We were impressed by the drive and responsiveness of this subsidiary. A determination to push forward and be the best is shared by the managers, who have set ambitious SD targets. Today, QDVC sets the standard in Qatar, from both an environmental and social point of view. They are above the local average. Nonetheless, the company could improve the organisation of its strategy. For example, the employee training policy could be more discerning. Its environmental reporting system should also serve as a management tool for achieving continuous improvement."

Thais Compoin and Sarah Tessei - Auditors at Vigeo

FOCUS ON A SUSTAINABLE DEVELOPMENT PROJECT: THE SEA HIGH-SPEED TRAIN LINE

The Southern Europe/Atlantic high-speed train line (LGV SEA) between Tours and Bordeaux in France, a construction site in preparation, sets an example in sustainable development.

Environment: strict resource management featuring, for example, energy-saving driving sessions, a fleet of cars and construction vehicles with low CO₂ emissions, rainwater collection to supply water for toilet flushing or washing areas, and a Carbon Foundation to offset part of the residual emissions.

Biodiversity: measures to preserve natural environments have been taken, such as creating a Biodiversity Foundation for the project.

Working with the local population: a consultation process was set up from the outset of the project to

work with local organisations and the population. A voluntary policy of social insertion through employment and economic activity was initiated. Of the total time consecrated to civil works, 10% will be reserved for people with social or professional problems.

Development of local economic activity: needs are identified in the early phase and local actors are systematically kept informed as soon as possible. This way they can adapt their products and tools, train personnel and consider bidding on announced contracts.

